

EVIO Labs Medford (pka Kenevir Research)
 540 East Vilas Road, Suite F, Central Point, OR 97502
 541-668-7444 / OLCC 010-1001626980D / www.EVIOLabs.com

TCC-19504
Rogue Naturals
 Info Only



Confident Cannabis ID: 1901KR0107.0293

Sample ID: M190111-01

Matrix: Topical

METRC Batch #:

Batch ID:

Sampling Method/SOP: SOP.T.20.010

Batch Size (g):

Date Sampled: 01/28/19 09:00

Unit for Sale:

Date Accepted: 01/28/19

Harvest/Production Date:

Harvest/Process Lot ID:

Cannabinoid Analysis

FOR INFORMATIONAL USE ONLY - NOT FOR REGULATORY PURPOSES

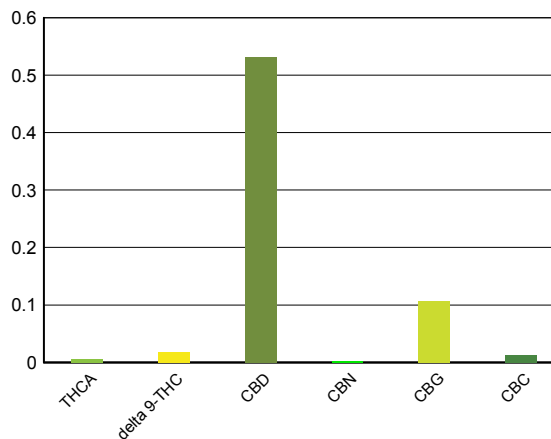
Date/Time Extracted: 01/29/19 11:42

Analysis Method/SOP: SOP.T.40.020

Date/Time Analyzed: 01/30/19 21:24

Cannabinoids	LOQ(%)	mg/g	% weight	Cannabinoid Profile
Total THC <small>((THCA*0.877)+Δ9THC)</small>		< LOQ	< LOQ	
Total CBD <small>((CBDA*0.877)+CBD)</small>		5.32	0.532	

THCA	0.100	< LOQ	< LOQ
delta 9-THC	0.100	< LOQ	< LOQ
delta 8-THC	0.100	< LOQ	< LOQ
CBDA	0.100	< LOQ	< LOQ
CBD	0.100	5.32	0.532
CBN	0.100	< LOQ	< LOQ
CBG	0.100	1.07	0.107
CBC	0.100	< LOQ	< LOQ
Sum of tested Cannabinoids	0.100	6.79	0.679



"Total THC" and "Total CBD" are calculated values and are an Oregon reporting requirement (OAR 333-064-0100). For Cannabinoid analysis, only delta 9-THC, THCA, CBD, CBDA are ORELAP accredited analytes. Cannabinoid values reported for plant matter are dry weight corrected; Oregon Water Activity action level is 0.65Aw and Oregon Moisture Content action level is 15%. Samples above limit will be highlighted RED; FD = Field Duplicate; LOQ = Limit of Quantitation.

Ian Riversong
 Laboratory Director - 1/31/2019

EVIO Labs Medford (pka Kenevir Research)
 540 East Vilas Road, Suite F, Central Point, OR 97502
 541-668-7444 / OLCC 010-1001626980D / www.EVIOLabs.com

FOR INFORMATIONAL USE ONLY - NOT FOR REGULATORY PURPOSES

TCC-19504

Rogue Naturals
 Info Only

Sample ID: M190111-01

METRC Batch #:

Matrix: Topical

Date Sampled: 01/28/19 09:00

Date Accepted: 01/28/19

Batch ID:

Batch Size:

Sampling Method/SOP: SOP.T.20.010

Yeast and Mold Enumeration

Date/Time Extracted: 01/29/19 12:18

Analysis Method/SOP: SOP.T.40.040

Date/Time Analyzed: 01/31/19 17:05

Total Colonies: 0.00 CFU/g

About Your Yeast and Mold Results

Botanical materials often have total yeast and mold counts between 1,500 - 7,500 CFU/g. Products that have undergone exposure to solvents, such as alcohol tinctures or concentrated materials extracted with butane, propane, hexane, carbon dioxide, or other organic solvents will typically feature total yeast and mold counts at 0 CFU/g.

The American Herbal Pharmacopoeia recommends herbal products contain no greater than 10,000 CFU/g of total yeasts and molds. Results above 10,000 CFU/g will be highlighted **Red**.

Yeasts vs Molds

Yeasts and molds are both broad types of fungi. Yeasts are unicellular and reproduce by budding, creating a small smooth appearance, whereas molds are multicellular and grow through fungal strands called hyphae, creating a fuzzy appearance often associated with mold.

Yeasts and molds are commonly found on natural products, and not all are harmful. Nevertheless, yeasts and molds, as well as their spores, can cause lung irritation, facilitate allergic reactions, or even present life-threatening conditions for immuno-compromised consumers. For instance, the dark mold, *Aspergillus*, can produce toxic chemical byproducts which can be harmful to human health. *Aspergillus* spores can lodge in small crevices in the lungs and grow, leading to a potentially life-threatening condition called Aspergillosis.

A simple total yeast and mold count can be a great way to monitor for potential health hazards in botanical products and help ensure the safety of consumers.



Ian Riversong
 Laboratory Director - 1/31/2019

Page 2 of 4

EVIO Labs Medford (pka Kenevir Research)
540 East Vilas Road, Suite F, Central Point, OR 97502
541-668-7444 / OLCC 010-1001626980D / www.EVIOLabs.com

FOR INFORMATIONAL USE ONLY - NOT FOR REGULATORY PURPOSES

TCC-19504

Rogue Naturals

Info Only

Sample ID: M190111-01

METRC Batch #:

Matrix: Topical

Date Sampled: 01/28/19 09:00

Date Accepted: 01/28/19

Batch ID:

Batch Size:

Sampling Method/SOP: SOP.T.20.010

Aerobic Plate Count

Date/Time Extracted: 01/29/19 12:19

Analysis Method/SOP: SOP.T.40.000

Date/Time Analyzed: 01/31/19 12:07

Total Colonies: 0.00 **CFU/g**

About Your Aerobic Plate Count (APC) Results

An aerobic plate count is a measure of the amount of bacteria in a sample that is capable of living in an oxygenated environment.

The American Herbal Pharmacopoeia recommends herbal products contain no greater than 100,000 CFU/g of total viable aerobic bacteria. For CO₂ and solvent based extracts, the AHP recommends a limit of no greater than 10,000 CFU/g.

Aerobic plate count is commonly applied to finish products, particularly foods. Traditionally manufacturers will monitor products for aerobic bacteria on a routine basis to ensure that the microbial load of a product is not increasing.



Ian Riversong
Laboratory Director - 1/31/2019

Page 3 of 4

EVIO Labs Medford (pka Kenevir Research)
 540 East Vilas Road, Suite F, Central Point, OR 97502
 541-668-7444 / OLCC 010-1001626980D / www.EVIOLabs.com

Quality Control

Batch: M19A119 - SOP.T.30.050 Prep for Cannabinoids

Blank(M19A119-BLK1)			Extracted: 01/29/19 11:43		Analyzed: 01/30/19 15:53		
Analyte	Result	LOQ	Recovery Limits	Analyte	Result	LOQ	Recovery Limits
THCA	< LOQ	0.100 (%)	< LOQ	delta 9-THC	< LOQ	0.100 (%)	< LOQ
delta 8-THC	< LOQ	0.100 (%)	< LOQ	CBDA	< LOQ	0.100 (%)	< LOQ
CBD	< LOQ	0.100 (%)	< LOQ	CBG	< LOQ	0.100 (%)	< LOQ
CBN	< LOQ	0.100 (%)	< LOQ	CBC	< LOQ	0.100 (%)	< LOQ
Sum of tested Cannabinoid:	< LOQ	0.100 (%)	< LOQ				

LCS(M19A119-BS1)			Extracted: 01/29/19 11:43		Analyzed: 01/30/19 16:10		
Analyte	% Recovery	LOQ	Recovery Limits	Analyte	% Recovery	LOQ	Recovery Limits
THCA	100	(%)	70-130	delta 9-THC	107	(%)	70-130
CBDA	104	(%)	70-130	CBD	106	(%)	70-130



Ian Riversong
 Laboratory Director - 1/31/2019